



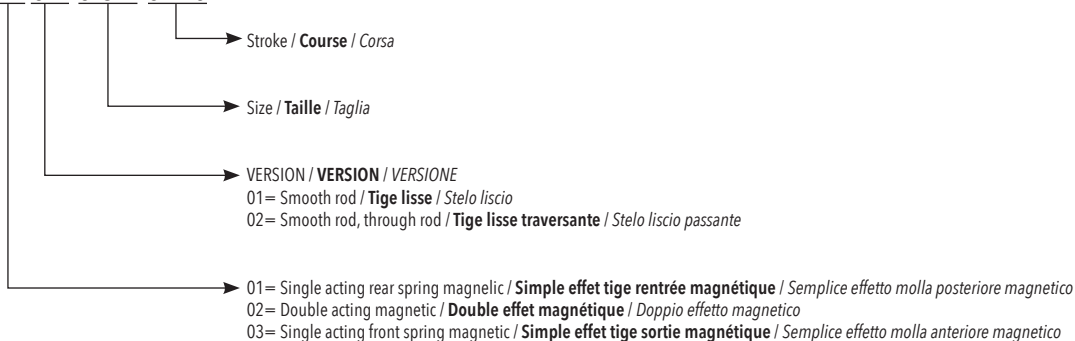
The purpose of stopper cylinders is to stop or block moving parts, such as load on an assembly line. They can also work as a stand-by stopping device, since they exploit the large diameter of the rod, using it as a pivot.

Le vérin stoppeur d'AIRWORK est utilisé pour arrêter ou bloquer un mouvement comme une charge sur une ligne de montage. Il peut aussi être utilisé comme butée et ce grâce à son diamètre de tige plus large.

I cilindri stopper hanno lo scopo di arrestare o bloccare parti in movimento, come i carichi all'interno di una linea di montaggio, oppure come blocco di stazionamento, sfruttando il grande diametro dello stelo utilizzandolo come perno.

ORDERING CODE / CODIFICATION / CHIAVE DI CODIFICA

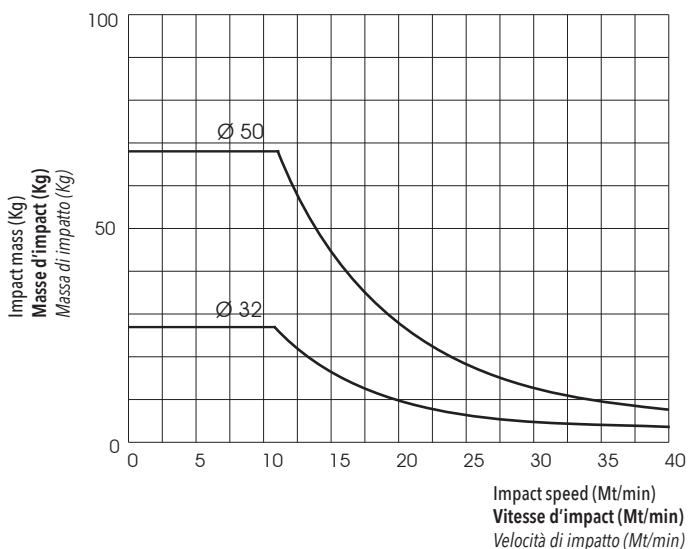
ST 0 1 0 1 0 3 2 0 2 0



TECHNICAL DATA / DONNÉES TECHNIQUES / DATI TECNICI

Sizes / Alesages / Alesaggi	Ø32 - 50
Standard strokes / Course standard / Corse standard	Ø32x20 - Ø50x30
Fluid / Fluide / Fluido	Lubricated or non lubricated air / Air lubrifié ou non / Aria con o senza lubrificazione
Operating temperature range / Température d'utilisation / Temperatura di esercizio	-20°C / +80°C
Max operating pressure / Pression max d'utilisation / Pressione massima di esercizio	10 bar
Force / Force / Forze sviluppate	Technical informations page / Page informations techniques / Pagina dati tecnici
Air consumption / Consommation d'air / Consumo aria	Technical informations page / Page informations techniques / Pagina dati tecnici

LOAD DIAGRAM / DIAGRAMME DE CHARGE / DIAGRAMMA DI CARICO

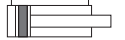


Ø 32 mm

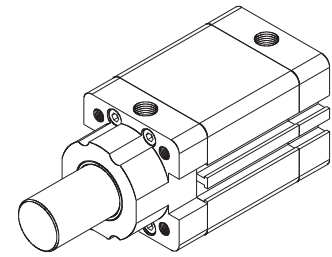
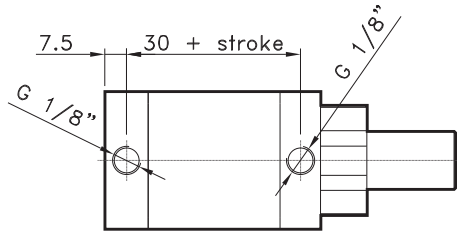
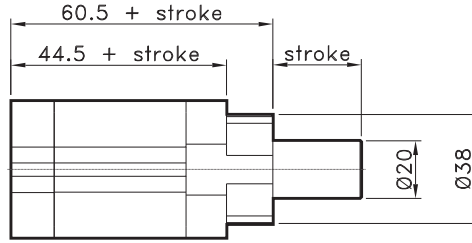
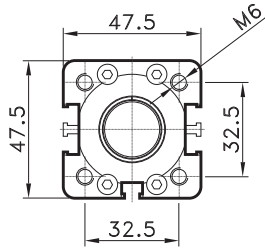
CODE: ST0101032.mm



CODE: ST0201032.mm



CODE: ST0301032.mm

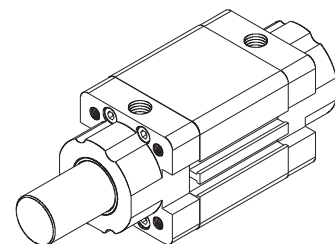
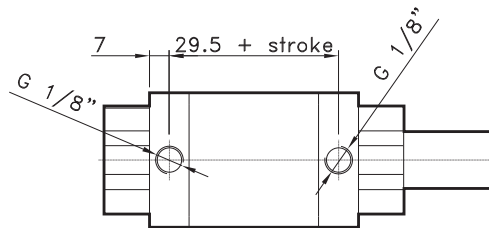
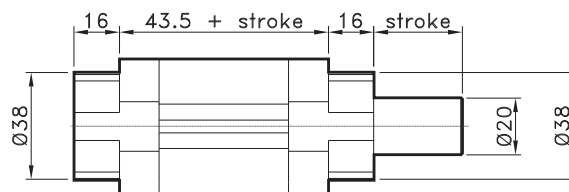
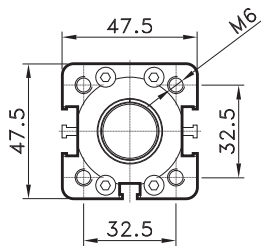


Ø 32 mm

CODE: ST0102032.mm



CODE: ST0202032.mm

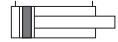


Ø 50 mm

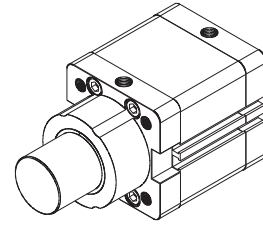
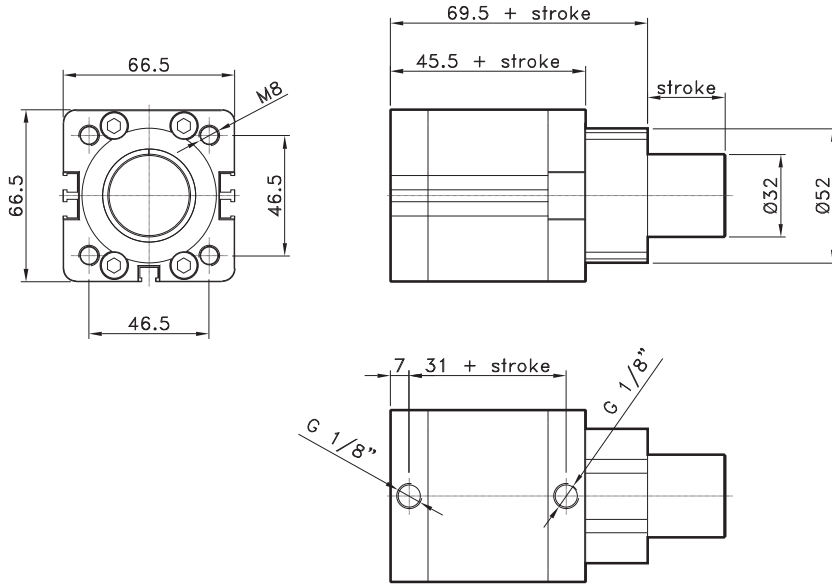
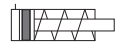
CODE: ST0101050.mm



CODE: ST0201050.mm



CODE: ST0301050.mm

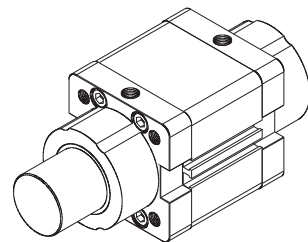
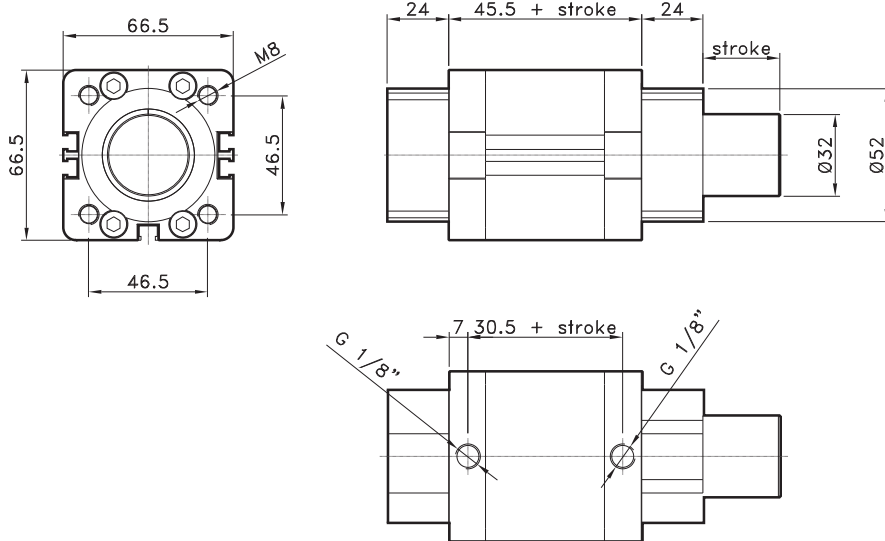


Ø 50 mm

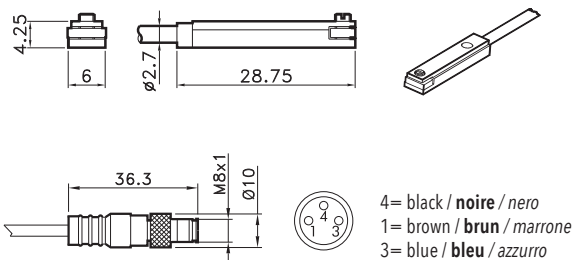
CODE: ST0102050.mm



CODE: ST0202050.mm



T SWITCH
CAPTEUR ENT
SENSORE AT



CODE

AR4023010	REED (MT.2,5) / REED (MT.2,5) / REED (MT.2,5)
AR4023020	HALL (MT.2,5) / HALL (MT.2,5) / HALL (MT.2,5)
AR4023110	REED + M8 (CM 30) / REED + M8 / REED + M8 (CM 30)
AR4023120	HALL + M8 (CM 30) / HALL + M8 / HALL + M8 (CM 30)

For technical data see page 1.62

Pour les données techniques, voir page 1.62

Per i dati tecnici vedere pag. 1.62