



*Valvole
Valves*

VALVOLE A SFERA MINI

Mini valvola a sfera con comando manuale ON/OFF con maniglietta

Funzionamento:	Si chiude e si apre girando la maniglietta da 1/4 di giro fino a fine corsa.
Direzione flusso:	Libero a scelta
Impiego:	Aria compressa - Aria compressa lubrificata Gas vari - Liquidi in genere
Pressione d'esercizio:	10 Bar - 1000 kPa (145PSI) MAX
Temperatura d'esercizio:	-5°C + 70°C
Materiali:	Corpo - Manicotto - Alberello - Sfera: Ottone CW 617W Seggi: PTFE vergine Vite: Acciaio O-Ring: NBR 70 Maniglietta: Nylon 6-6 Tappo: Nylon 6-6 Finitura Esterna: Nichelata
Misure:	1/8" - 1/4" - 3/8" - 1/2"
Estremità:	con filetti G / GA - ISO 228 - R ISO 7 (Rp - ISO 7 - NPT a richiesta
Forma:	Femmina - Femmina / Maschio - Femmina

VALVOLE UNIDIREZIONALI CON OTTURATORE A SFERA

Valvola di non ritorno unidirezionale. Il sistema con chiusura a sfera dà il vantaggio di eliminare l'attrito dei componenti aumentando la durata nel tempo (long life).

Funzionamento:	Il fluido passa nella direzione della freccia e non ritorna indietro.
Direzione flusso:	Come indicato dalla freccia
Impiego:	Aria compressa - Aria compressa lubrificata Gas vari - Liquidi in genere
Pressione d'esercizio:	Vedi tabella A
Temperatura d'esercizio:	Vedi tabella A
Materiali:	Corpo: Ottone CW 614N Nichelato Pinza: Ottone CW 614N Sfera e Molla: Acciaio Inox AISI 304 O-Ring: NBR 70
Misure:	M5 - 1/8" - 1/4" - 3/8" - 1/2"
Estremità:	con filetti G / GA - ISO 228 (Rp - R ISO 7 - NPT a richiesta)
Forma:	Femmina - Femmina / Maschio - Femmina Maschio - Maschio

TABELLA A

PRESSIONE DI ESERCIZIO Min. - Max.	PRESSIONE MAX DI APERTURA	TEMPERATURA
0,5 - 10 bar 50 - 1000kPa 7 - 145 PSI	0,07 bar 7kPa 1PSI	- 5°C + 70°C

Technical Features

MINI BALL VALVES

Mini ball valve with manual command ON/OFF with handle

Function:	Open and close by turning the handle of 1/4 turn, till the end of the stroke.
Flow direction:	Free
Use:	Compressed air - Lubricated compressed air Various gasses - Various liquids
Working Pressure:	10 Bar - 1000 kPa (145PSI) MAX
Working temperature:	+23°F + 160°F
Materials	Body - Sleeve - Pin - Ball: CW 617W Brass Seats: Virgin PTFE Screws: Steel O-Ring: NBR 70 Handle: Nylon 6-6 Button: Nylon 6-6 Finish: Nickel plated
Sizes	1/8" - 1/4" - 3/8" - 1/2"
Extremity	with threads G / GA - ISO 228 - R ISO 7 (Rp - ISO 7 - NPT on request)
Shape	Female - Female / Male - Female / Male - Male

UNIDIRECTIONAL VALVES

Unidirectional valve with ball shutter. The ball shutter system avoid the friction of the components. Increasing the live of product (long life).

Function:	The fluid pass in the direction of the arrow and cannot return back.
Flow direction:	As indicated by the arrow
Use:	Compressed air Lubricated compressed air Various gasses - Various liquids
Working Pressure:	See table A
Working temperature:	See table A
Materials	Body: Brass CW 614N Nickel Pliers : Brass CW 614N Ball and spring : Stainless steel AISI 304 O-Ring: NBR 70
Sizes	M5 - 1/8" - 1/4" - 3/8" - 1/2"
Extremity	with threads G / GA - ISO 228 (Rp - R ISO 7 - NPT on request)
Shape	Female - Female / Male - Female / Male - Male

TABLE A

WORKING PRESSURE Min. - Max.	MAX OPENING PRESSURE	TEMPERATURE
0,5 - 10 bar 50 - 1000kPa 7 - 145 PSI	0,07 bar 7kPa 1PSI	+ 23°F + 160°F

VALVOLE A CORSOIO CON SCARICO

Valvola a comando manuale ON/OFF con scarico a valle in posizione di chiuso.

Funzionamento: Chiusura e Apertura spostando avanti /indietro il corsoio come indicato dalle frecce, fino a fine corsa.

Direzione flusso: Come indicato dalla scritta FLOW

Impiego: Aria compressa - Aria compressa lubrificata
Gas vari - Liquidi in genere

Pressione d'esercizio: 10 bar – 1000 kPa (145 PSI) MAX.

Temperatura d'esercizio: - 5°C + 70°C

Materiali: Perno: Alluminio anodizzato
Corsoio: Alluminio verniciato
O-Ring: NBR 70
Anello Elastico: Acciaio Inox AISI 302

Misure: 1/8" - 1/4" - 3/8" - 1/2" - 3/4" - 1"

Estremità: con filetti G - GA ISO 228
(Rp - R ISO 7 - NPT a richiesta)

Forma: Femmina - Femmina / Maschio - Femmina
Maschio - Maschio

Technical Features

SLIDE VALVES

Manual valve ON/OFF with exhaust in exit in closed position.

Function: To open and close the valve, move forward or backward the spider as indicated by the arrow.

Flow direction: As indicated by the point "FLOW"

Use: Compressed air
Lubricated compressed air
Various gasses - Various liquids

Working Pressure: 10 bar – 1000 kPa (145 PSI) MAX.

Working temperature: + 23°F + 160°F

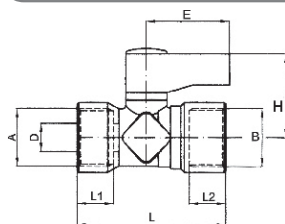
Materials Pin: Anodized aluminium
Slider: Varnished aluminium
O-Ring: NBR 70
Elastic ring : Stainless Steel AISI 302

Sizes 1/8" - 1/4" - 3/8" - 1/2" - 3/4" - 1"

Extremity with threads G / GA - ISO 228
(Rp - R ISO 7 - NPT on request)

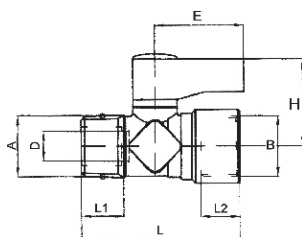
Shape Female - Female / Male - Female / Male - Male

VALVOLA A SFERA MINI F/F CILINDRICA • FEMALE/FEMALE MINI BALL VALVE

202FF

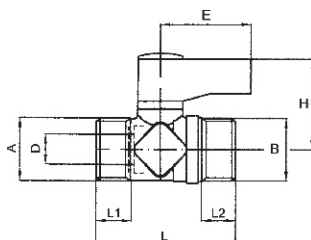
CODE	A	B	D	E	H	L1	L2	L		
202FF 1/8	1/8	1/8	6,0	24,0	23,0	8,0	8,0	34,0	14	20
202FF 1/4	1/4	1/4	6,0	24,0	23,0	9,5	9,5	38,0	14	20
202FF 3/8	3/8	3/8	8,0	24,0	24,0	10,5	10,5	43,0	18	20
202FF 1/2	1/2	1/2	10,0	34,0	27,0	12,0	12,0	49,0	22	20

VALVOLA A SFERA MINI MASCHIO/FEMMINA CILINDRICA • MALE/FEMALE MINI BALL VALVE

202MF

CODE	A	B	D	E	H	L1	L2	L		
202MF 1/8	1/8	1/8	6,0	24,0	23,0	7,0	8,0	33,0	14	20
202MF 1/4	1/4	1/4	6,0	24,0	23,0	8,0	9,5	35,0	14	20
202MF 3/8	3/8	3/8	8,0	24,0	24,0	9,0	10,5	40,0	18	20
202MF 1/2	1/2	1/2	10,0	34,0	27,0	10,0	12,0	49,0	22	20

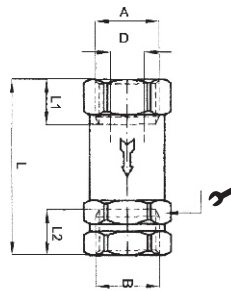
VALVOLA A SFERA MINI M/M CILINDRICA • MALE/MALE MINI BALL VALVE

202MM

CODE	A	B	D	E	H	L1	L2	L		
202MM 1/8	1/8	1/8	6,0	24,0	23,0	7,0	7,0	33,0	14	20
202MM 1/4	1/4	1/4	6,0	24,0	23,0	8,0	8,0	34,0	14	20
202MM 3/8	3/8	3/8	8,0	24,0	24,0	9,0	9,0	37,0	14	20
202MM 1/2	1/2	1/2	10,0	34,0	27,0	10,0	10,0	43,0	14	20

VALVOLA UNIDIREZIONALE F/F • FEMALE/FEMALE UNIDIRECTIONAL CHECK VALVE

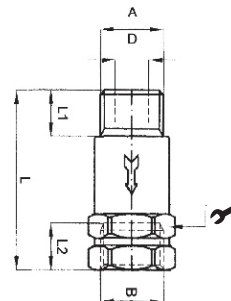
302



CODE	A	B	D	L1	L2	L		
302 M5	M5	M5	2.8	6	6	24	10	10
302 1/8	1/8	1/8	5	8	8	31	13	10
302 1/4	1/4	1/4	7	9,5	9,5	37	16	10
302 3/8	3/8	3/8	8,5	10,5	10,5	42	20	10
302 1/2	1/2	1/2	12	12	12	50	25	10

VALVOLA UNIDIREZIONALE M/F • MALE/FEMALE UNIDIRECTIONAL CHECK VALVE

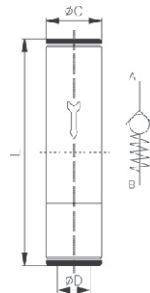
302M



CODE	A	B	D	L1	L2	L		
302M M5	M5	M5	2.8	4,5	6	23	10	10
302M 1/8	1/8	1/8	5	8	8	31	13	10
302M 1/4	1/4	1/4	7	9,5	9,5	37	16	10
302M 3/8	3/8	3/8	8,5	10,5	10,5	42	20	10
302M 1/2	1/2	1/2	12	12	12	50	25	10

VALVOLA DI NON RITORNO • UNION CONNECTOR CHECK VALVE

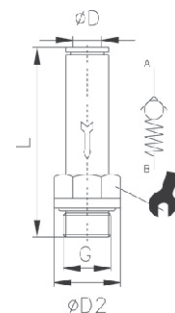
A150



CODE	ØD	ØC	L		
A150-4	4	9	40,5	10	
A150-6	6	11	44,5	10	
A150-8	8	13	48,5	10	

DIRITTO MASCHIO CILINDRICO CON VALVOLA DI NON RITORNO • MALE CONNECTOR CHECK VALVE BSP

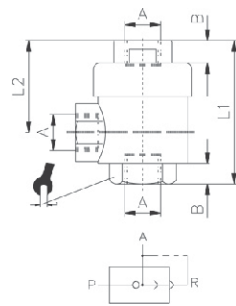
A151



CODE	ØD	G	ØD2	L		
A151 4-M5	4	M5	8	35,0	9	10
A151 4-1/8	4	G1/8	13	28,5	11	10
A151 6-1/8	6	G1/8	13	35,0	13	10
A151 6-1/4	6	G1/4	16	37,0	14	10
A151 8-1/8	8	G1/8	13	36,0	15	10
A151 8-1/4	8	G1/4	16	37,0	16	10
A151 10-1/4	10	G1/4	16	40,0	18	10
A151 10-3/8	10	G3/8	20	40,0	18	10
A151 12-1/2	12	G1/2	25	44,0	22	10
A151 14-1/2	14	G1/2	25	50,5	25	10

VALVOLA DI SCARICO RAPIDO • QUICK EXHAUST VALVE

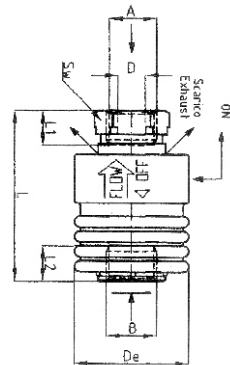
VSC



CODE	A	B	L1	L2		
VSC M5	M5	5,0	25,0	17	10	25
VSC 1/8	1/8	8,0	42,0	28	14	25
VSC 1/4	1/4	11,0	53,0	34	19	25
VSC 3/8	3/8	11,5	60,5	40	22	10
VSC 1/2	1/2	14,0	70,0	44	26	10
VSC 3/4	3/4	19,0	87,0	37	32	5
VSC 1	1	16,0	108,0	70	46	1

VALVOLA A CORSOIO IN ALLUMINIO • SLIDE VALVE

VMS



CODE	A	ØB	L		
VMS 1/8	1/8	25	48	14	10
VMS 1/4	1/4	30	58	17	10
VMS 3/8	3/8	35	68	22	10
VMS 1/2	1/2	40	80	27	10



Italfitting è un marchio Tecnofluid

Sede operativa:
Via Dei Mille, 1
20811 Cesano Maderno (MB)
Tel +39 (0)362 645981
Fax +39 (0)362 645999
info@italfitting.it
www.italfitting.it

