



FRX flow regulators, produced in stainless steel AISI 316L, can be used in several fields: food and beverage, pharmaceutical, or in particularly aggressive environments.

Les régulateurs de débit série FRX, produits en acier inoxydable AISI 316L, peuvent être utilisés en plusieurs secteurs: aliments et boissons, pharmaceutiques ou dans des environnements particulièrement agressifs.

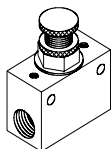
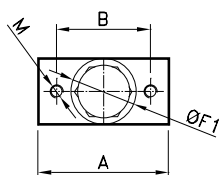
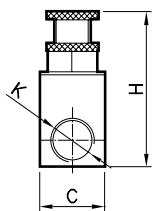
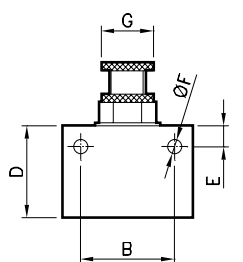
I regolatori di flusso FRX sono realizzati in acciaio inox 316L quindi possono essere utilizzati in qualsiasi settore: alimentare, farmaceutico oppure in ambienti particolarmente aggressivi.

TECHNICAL DATA / **DONNÉES TECHNIQUES** / **DATI TECNICI**

Fluid / Fluide / Fluido	Lubricated or non lubricated air / Air lubrifié ou non / Aria con o senza lubrificazione
Pressure range / Pression d'utilisation / Pressione di esercizio	0,5 - 16bar
Temperature range / Température d'utilisation / Temperatura di esercizio	-15C° - +120C°
Nominal flow rate at 6 bar / Débit à 6 bar / Portata a 6 bar	Uni-directional / Unidirectionnel / <i>Unidirezionale</i> : 1/8=2300 NI/min - 1/4=2300 NI/min - 3/8=4500 NI/min - 1/2=5200 NI/min

COMPONENTS / **COMPOSANTS** / **COMPONENTI**

Body / Corps / Corpo	Stainless steel 316L / Acier Inox 316L / Acciaio inox 316L
Internal parts / Partie interne / Parti interne	Stainless steel 316L / Acier Inox 316L / Acciaio inox 316L
Seals / Joints / Guarnizioni	FKM



Bi-directional
Bidirectionnel
Bidirezionale

CODE	A
RFX005200	1/8
RFX005300	1/4
RFX005400	3/8
RFX005500	1/2

Uni-directional
Unidirectionnel
Unidirezionale

CODE	A
RFX004200	1/8
RFX004300	1/4
RFX004400	3/8
RFX004500	1/2

	K	A	B	C	D	E	F	F1	G	H (min/max)	M	(g)
1/8		40	30	20	30	8	5.4	20	20	49 / 54	M5	178
1/4		40	30	20	30	8	5.4	20	20	49 / 54	M5	168
3/8		49	36	25	35	8	5.4	25	20	57 / 66	M5	310
1/2		49	36	25	35	8	5.4	25	20	57 / 66	M5	305